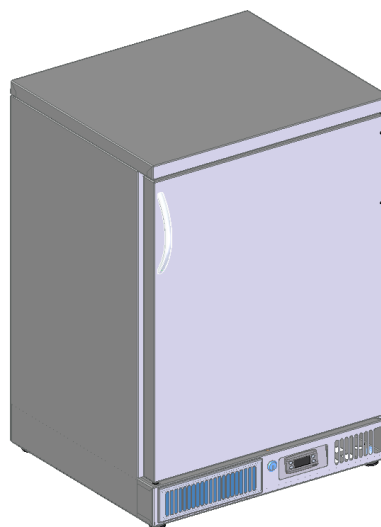


FEATURES:

- ✦ made of stainless steel
- ✦ digital control with temperature display
- ✦ designed to work in ambient temp. up to +30°C
- ✦ forced air circulation
- ✦ evaporator with anti-corrosion coating
- ✦ ecological refrigerant R290
- ✦ ECO mode- energy saving mode
- ✦ deep-freezing mode
- ✦ automatic drip water evaporation
- ✦ automatic and manual defrost of condenser
- ✦ polyurethane insulation 50 mm
- ✦ removable, magnetic door gasket
- ✦ removable rails supports
- ✦ flat bottom of the chamber
- ✦ height adjustable shelves
- ✦ LED light
- ✦ possibility to change door opening direction
- ✦ internal temperature -20 ÷ -10°C
- ✦ max. load per shelf: 15 kg
- ✦ power supply: 230V/50Hz



STANDARD:

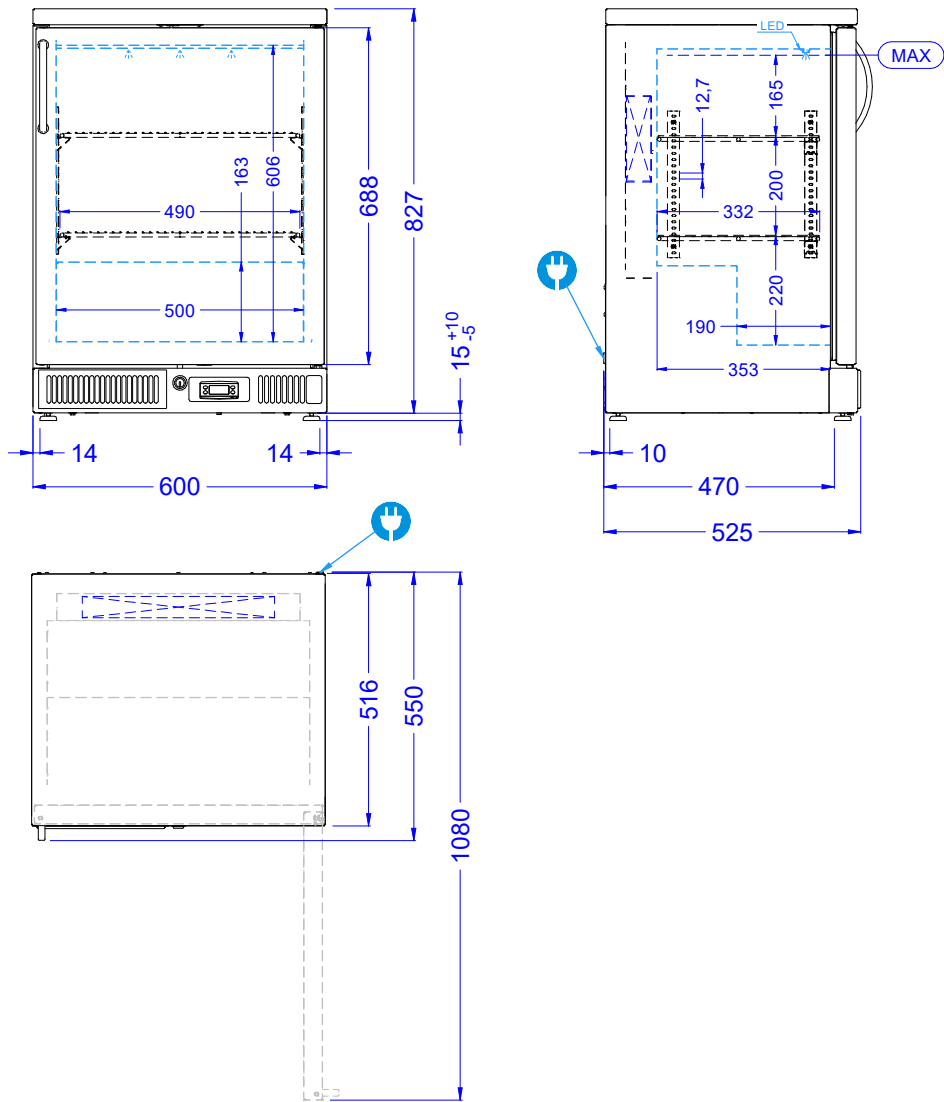
- ✦ 2 metal, plastic coated wire trays
- ✦ lock

OPTIONAL EQUIPEMENT:

- ✦ glass hanger (shelf)

Code	Energy efficiency class	Climate class	Net capacity [L]	Capacity [pcs.]	E24h [kWh]	Power [kW]	Weight [kg]	Ext. dimensions [mm]
BFK1000-060CV	D	4	75	e.g. 80 glasses (ø60 mm)	4,457	0,3	65	600x516x840

E24h - energy consumption in 24h



PRODUCT CODING SYTEM

B	F	K	1	0	0	0	-	-	C	V
bar furniture	freezing devices	bar refrigerators	hinged, full	void (void option)	void (void option)	void (void option)			516 mm	Stainless steel h = 840 mm
				void (void option)	void (void option)	void (void option)				
				void (void option)	void (void option)	void (void option)				
				void (void option)	void (void option)	void (void option)				
										Standard
										Width of the device (dimension B)
										C
										Length of the device [cm]
										060
										600 mm